
Setting a scene

The Vanishing

Group G&H

Bojing Wu

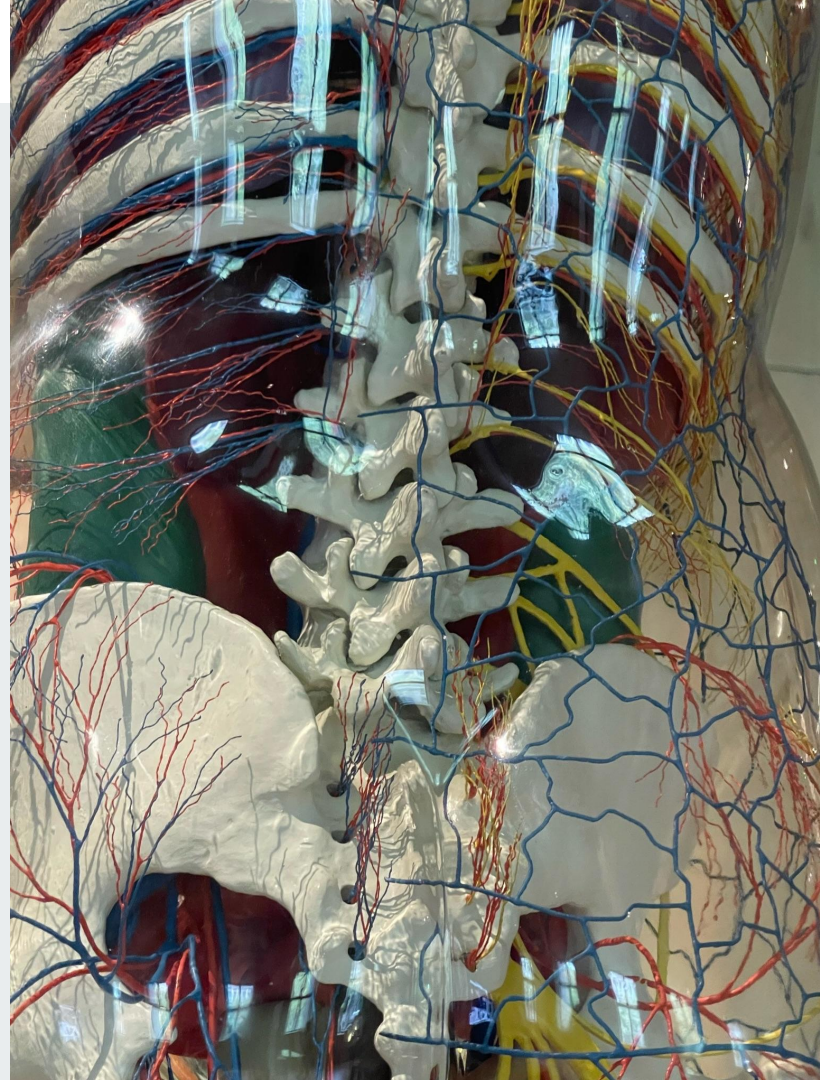
Fangyi Ren

Gezhi Zheng (Anli

Jia Wei (Sena)

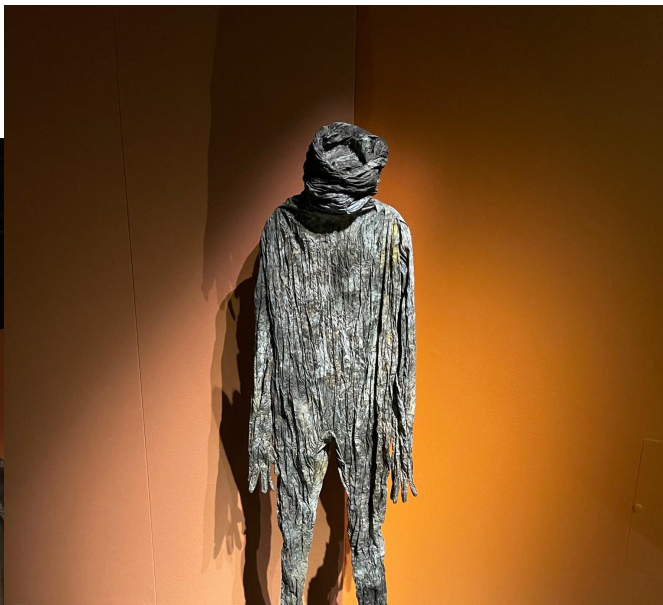
Nanyue Zhou (kaitlyn

Shiyu Wang



Wellcome Collection, 183 Euston Rd, London NW1 2BE

Rooted Beings



“Reimagine our relationship with plants”

Gözde Ilkin collects domestic textiles to create visions that break down the boundaries between human, animal and plant. She embroiders with her mother, referencing how knowledge is handed down. The dyes are derived from plants that have roles in shamanic rituals.

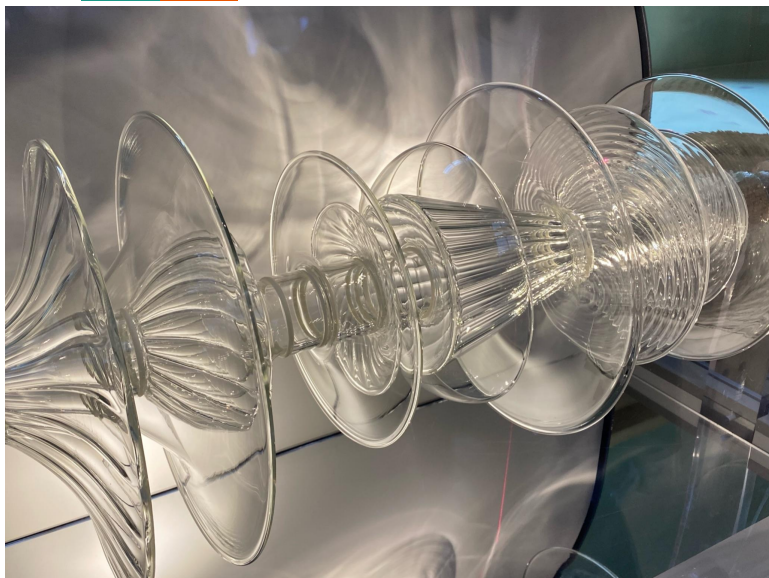
The Phasmatodea, or Spectra, are an order of insects that resemble plants. Commonly known as stick insects, they are also referred to as ghost insects. The fabric of this insect suit is made to mirror the bark of the London plane tree (*Platanus x acerifolia*), breaking down the boundaries between human phantom, insect and plant. Several of these skins will be activated in a performance under the Great Plane, a 200-year-old plane tree in Brunswick Square, local to Wellcome Collection.

Eduardo Navarro's series of contemplative drawings depict part-human, part-plant beings. The work is made with charcoal on handmade, biodegradable envelopes, which contain London plane-tree seeds. At the end of the exhibition, the envelopes will be buried, returning them to the soil. Eduardo Navarro's series of contemplative drawings depict part-human, part-plant beings. The work is made with charcoal on handmade, biodegradable envelopes, which contain London plane-tree seeds. At the end of the exhibition, the envelopes will be buried, returning them to the soil.

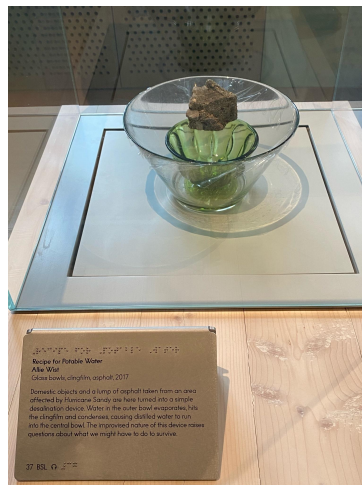


Wellcome Collection, 183 Euston Rd, London NW1 2BE

Being Human



This interactive jukebox is loaded with songs from around the world relating to illness and epidemics. You can listen to hits like 'Let's Talk about PrEP' (PrEP is pre-exposure prophylaxis for HIV) and 'Ebola in Town'. Each track lights up and designers [Kin](#) worked with [Bethan Laura Wood](#) to include a rotating glass sculpture.



Yinka Shonibare's 'Refugee Astronaut' encourages us to ask questions: who are they? Why have they had to leave earth in such a hurry? If you look closely at the possessions on their back you can find books, photographs and intriguing objects: a telescope, a camera, even a frying pan.

“Human in the 21st century”



📍 Wellcome Collection, 183 Euston Rd, London NW1 2BE

Medicine Man

“workings of the human body”



Vanitas are works of art intended to remind us of the transience of life and the certainty of death. This wax and cloth example – modelled on Queen Elizabeth I – shows symbols of mortality, including a skull, and insects eating decaying flesh.



Wellcome Collection, 183 Euston Rd, London NW1 2BE

Sound



build around rhythm and space of a forest

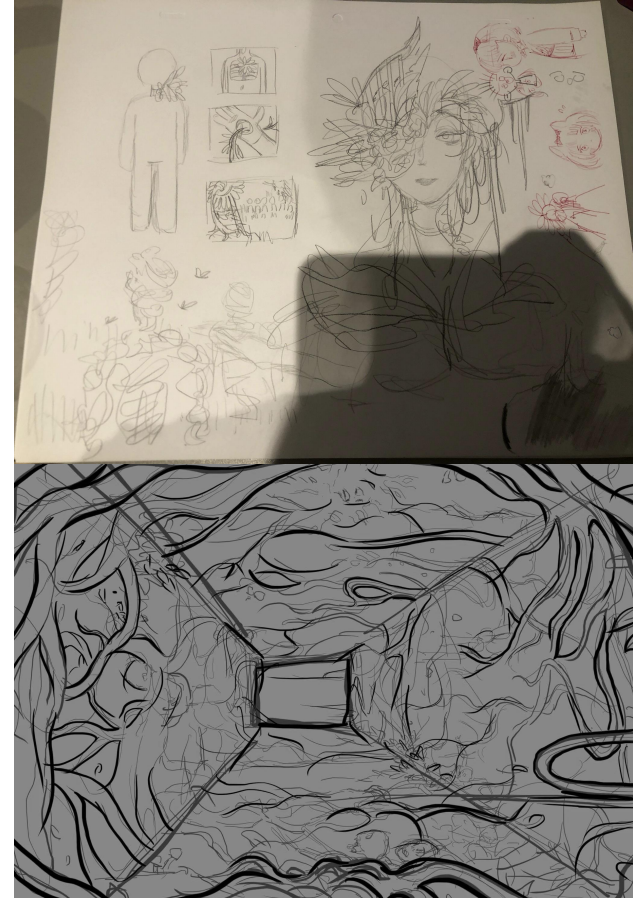
Recorded by Jane

Wellcome Collection, 183 Euston Rd, London NW1 2BE

Sketches & Background



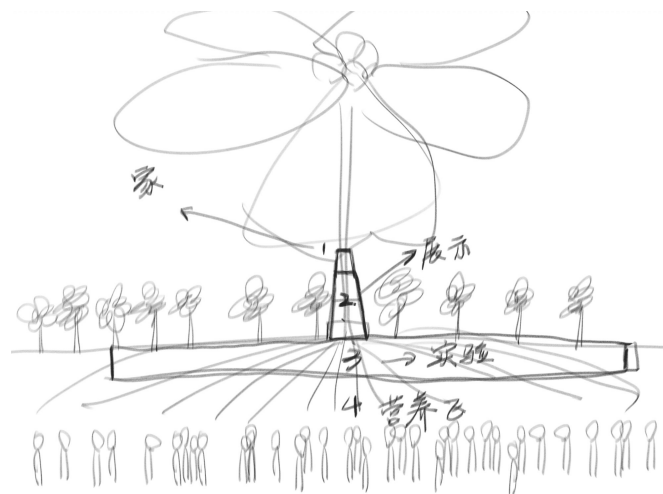
Hundreds of years later, due to the gradual deterioration of the environment, humans planned to invent a drug that would allow plants to grow quickly. But in the course of the experiment, the drug causes the plants to mutate and become aggressive, and what's worse is that it gets out of the laboratory and starts to spread in the outside world. These plants are growing uncontrollably in all parts of the world and for some reason are very hostile to other creatures, especially humans. According to information, there are only two outcomes for humans when caught by these plants. It is corrosion or assimilation.



• Wellcome Collection, 183 Euston Rd, London NW1 2BE

Storyline

In a tower live two survivors, Torne and Bomen, who have lived here for a long time. One day the Torne remembered something very important that he had left outside, and in order to help his partner not to have any regrets, Bomen quietly went out of the tower at night to help his partner find the item. The next morning, when Torne found his partner was missing, he hurriedly searched for the man from the top of the tower downwards. Eventually, Torne found Bomen outside the tower, but he had been infected by the plant, and in Bomen's hand was still holding the object that he had mentioned last night.



Wellcome Collection, 183 Euston Rd, London NW1 2BE

Storyboard

